



URBAN MEDIA ART ACADEMY

Ideas and Concepts Workshop
“Emotional Transitions”
November 17 - 19, 2017

Project Title /
Artist(s): EMOTI-KHON

Sornchai Chatviriyachai
Chayanut Harinrojsophon
Pat Pataranutaporn
Bank Ngamarunchot
Potiwat Ngamkajornwiwat
Vipatsaya U-poon
Tawan Thintawornkul
Werasak Surareungchai
Yanyong Boon-Long

WHAT

Augmented Reality Mirror which put Khon Masks onto the face of the onlookers as Phra, Yak or Ling according to their emotions.

WHY

Urban citizen often face rush-lifestyle and cannot realize their own state of mind

WHEN

We've lost touch with ourselves and our inner emotions.

WHERE

Pathways that have high-density commuters such as Patumwan, Sathorn or Silom.

HOW

Human-size LED screen equipped with face recognition and AI engine to classify emotions and project mask onto the onlooker.



FREAK

Futuristic Research (Freak Lab)
<http://freak.kmutt.ac.th>

Motivation:

Transforming Human's Emotion Through
The Convergence of Artistic Innovation and Cultural Heritage

Artistic Idea

1. Visualize how human are unaware of their emotional expression through metaphoric mask
2. influencing the transformation of human's emotion once the person interact with the installation.
3. co-creating dialogue on how urban environment change the dynamics of human interaction

Context

The tradition Thai dance “Khon” was chosen as a means to represent emotional state of participants. The “Khon”- inspired masks is the manifestation of human emotion in its purest and archetypal form which could be immediately recognized universally regardless of any cultures.

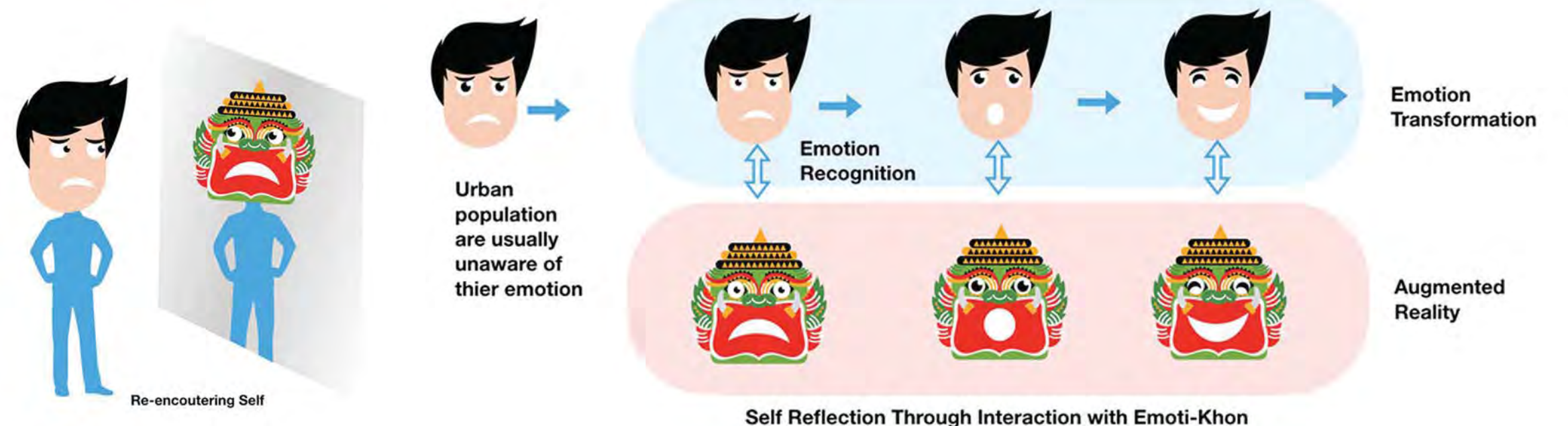
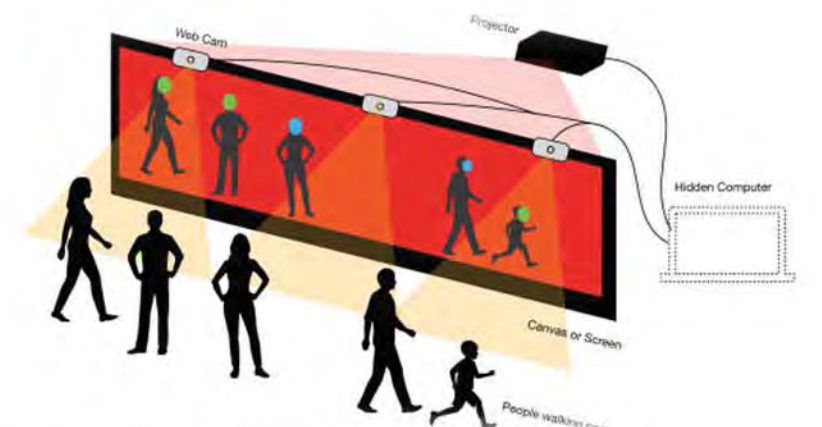
Community

Emoti-Khon plays with human subjectivity in a tongue-in-a-cheek way by giving the subject a mask that alters their self-image virtually. Suddenly, we activate the old ritual as old as human civilization, the dramatic masks! The use of immediately recognized cultural artifact, Khon masks, is by no means arbitrary. The giant and prince in particular are archetypal images dated long before Ramayana back from greek mythology and also appear in the book Genesis.

Technology

This media installation visualizes human's emotional expression by transforming human's faces into Yaak (giant) if the person is in the negative emotion, Pra (prince) if the person has positive mood and Ling (monkey) if the person is in a playful mood. These transformation is done using computer vision, and facial recognition technique and project on the wall as the mirror for people to realize their emotion.

The Prototype of Emoti-Khon Facial Recognition System



“In psychoanalytic theory, the mirror stage is crucial stage in the development of human subjectivity. In simple words, we as human always see ourselves through the looking-glass and create our self-image accordingly.”

